

# Master Course in GBR and Sinus Floor Elevation Procedures

**COURSE OVERVIEW** In the past 25 years, implant therapy has rapidly expanded in private practice documented by a large number of implant patients every year. This positive development is due to various factors, among them a significant progress with bone augmentation procedures. In our department, roughly 60% of implants are placed in conjunction with a bone augmentation procedure today, using either a simultaneous or a staged approach. The two main surgical techniques for bone augmentation are the GBR technique using a 2-layer composite graft and barrier membranes, and the sinus floor elevation (SFE) procedure using either the lateral window technique or the transalveolar Osteotome technique. Both augmentation procedures are routinely used in our department for more than 20 years to overcome local bone deficiencies. Both techniques provide excellent regenerative outcomes and long-term stability with high predictability as documented by numerous clinical 10-year studies.

This interactive 3 day CE course has been established 19 years ago for experienced implant surgeons. The speakers will present the biological basis for current surgical procedures in various lectures, and the criteria for the selection of appropriate biomaterials. State-of-the-art information will also be provided on 3D preoperative analysis of implant patients with anatomic borderline situations using CBCT, the different surgical techniques will not only be presented and discussed in various lectures, but also demonstrated with 5 to 6 live surgeries. In addition, two hands-on workshops are offered.

## COURSE TOPICS INCLUDE

- Welcome and current trends in implant surgery
- Oral anatomy in implant patients
- Cellular and molecular aspects of bone healing
- Bone healing in membrane-protected defects: Barrier membranes and bone fillers
- Hard and soft tissue alterations post extraction incl. Socket grafting
- Implant placement post-extraction:
- When immediate, when early, when late?
- Early implant placement with simultaneous Contour Augmentation using GBR
- SFE with the lateral window technique
- SFE with the Osteotome technique
- GBR procedures in the mandible
- GBR procedures in complex cases
- 5–6 Live surgeries with GBR and SFE procedures
- 2 hands-on workshops practicing the GBR and SFE technique

## BERN, SWITZERLAND

**LOCATION**—School of Dental Medicine, André Schroeder Auditorium, Freiburgstrasse 7, 3010 Bern, Switzerland

**DATE**—June 19–21, 2019

**TIME**—08:30–17:30 h

**DURATION**—3 days

**HOST**—Center for Continuing Dental Education



**FEE**—CHF 3200

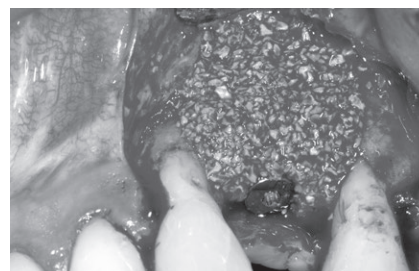
CHF 1800 (for post-doc students, only with confirmation of university)  
Fee includes course materials, PDF handouts of all presentations, coffee breaks, a dinner.

**TARGET GROUP**—Dentists

**SPEAKERS**—Prof. Dr. Daniel Buser, Prof. Dr. Dieter Bosshardt, Prof. Dr. Vivianne Chappuis, Prof. Dr. Thomas von Arx, Dr. Mariya Asparuhova, Dr. Simone Janner

## REGISTRATION AND INFORMATION—

Center for Continuing Dental Education  
Mr. Ueli Nacht  
Phone: +41 (0) 313 12 43 12  
Fax: +41 (0) 313 12 43 14  
info@ccde.ch  
www.ccde.ch



● ● ●  
LEVEL

EN  
LANGUAGE

25  
CREDITS

LECTURE

HANDS-ON

LIVE